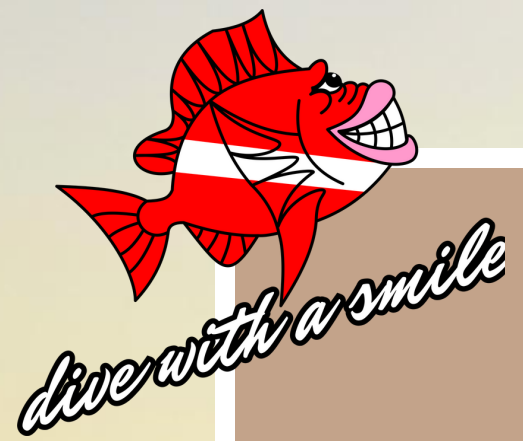




*IN ALL OUR DIVE CENTERS IN THE VISAYAS*

# HOW TO MAKE IT IN THE COMING MONTHS

Sea Explorers guilines during Covid-19 pandemic



## WORDS OF THE MANAGEMENT

In order to help contain and prevent the spread of the virus, and to ensure the safety of our guests and staff, the following are Sea Explorers accredited guidelines to be followed until such a time that the WHO announces the end of the pandemic

*Let's continue to "dive with a smile"*



# BEFORE ARRIVAL:

## WHAT TO CHECK PRIOR TO YOUR DEPARTURE

- All pre-booked guests must download and fill out all the necessary company check-in documents (diver registration, medical statement (for courses), and DAN Covid-19 questionnaire). This will avoid longer time at the office upon check-in.
- Sea Explorers advises guests to purchase packages, courses etc. in advance and encourages guests to use online payments such as bank transfers or PayPal. In case of cash payments for small retail items, sanctuary fees etc, a UV sterilizer box will be in place for banknotes.
- Travel and dive insurance are highly encouraged. Please note that Sea Explorers is associated with DiveAssure Insurance and a link is available from Sea Explorers website.
- A medical facemask or a cloth face covering will be requested during your travel time as well as during your diving holidays. Be sure that you will have enough protections for your total journey otherwise, you will be requested to purchase one of those prior to your check in.
- The company strongly advises guests (students or divers) to purchase at least their own scuba mask prior to start any diving or snorkeling activities.



# UPON CHECK-IN: WHAT IS IMPORTANT TO KNOW BEFORE

- Sea Explorers will conduct a daily health check for all employees that are scheduled to work and provide staff with the proper Personal Protective Equipment (PPE).
- Sea Explorers will follow the strict rule of “no mask – no entry” in all the closed areas (office, equipment room etc.) and at all time on board of bankas. Footbaths with the required mix of water and disinfectant are placed in front each rooms and office of the dive center.
- Only 2 guests at a time will be allowed inside the office, please respect the social distancing (2 meters / 6 feet) and stay on the markings displayed on the floor. For group check-in, only the leader of the group will enter the office and will register the whole group.
- You will be subject to the use of a noncontact temperature thermo scan reading prior to check-in. The reading must be under 37,9 C° to enter or participate in any diving activity. The office staff will then assist with disinfection by spraying alcohol on your hands at the desk.
- Guests with fever and flu-like symptoms will be requested to self-quarantine in their room and Department of Health must be informed through its hotline for further instructions.
- No filling out of papers in the office, only signatures and payments. Any paperwork needed to be filled out, especially for walk-ins, should be done outside of the office.





- No briefings inside closed areas, it should be done exclusively in open areas. All should be clearly explained without having to go inside the different areas. For better understanding, the employee doing the briefing will wear a face shield instead of a face mask.
- Disinfected ball pens will be at the disposal of the guests inside the office and should be returned to the designated area after use.
- The staff will not be allowed to touch any certification cards, please make sure that you nicely show them for the staff to clearly see all the information.
- While only 2 guests will be allowed in the office at the same time, please wait outside if you can see that other guests are already in.
- High contact points and surfaces such as doorknobs and counters will be cleaned and disinfected frequently.
- A UV germicidal irradiation will take place every day after office hours for a duration of one hour.



# IN THE DIVE CENTER: WHAT TO DO ON THE SPOT

- Upon arrival, you are encouraged to carry your own dive gears and place it all in your respective diving box. If this cannot be done, then you can remove your regulator and mask from the gear bag then have the staff bring the bag directly to the dive center and place the equipment in the box wearing gloves during the whole procedure.
- Sea Explorers advises its divers to rinse their equipment only once a day instead of after every dive (compulsory for Cabilao due to the limited fresh water supply on the island).
- Please respect the social distancing (2 meters / 6 feet) in all areas of the dive center (equipment room, drying station, cleaning station etc.).
- For all confined areas, the “no mask – no entry” will apply, but we recommend that you wear your mask at all times to avoid touching it during constant removal and replacement. Only 4 divers (2 only for Alona) at a time will be allowed in the equipment rooms, if the rooms are already full, please wait for your turn. Only 2 photographers at the time in the camera room of Cabilao.
- A UV germicidal irradiation will take place every day after office hours for a duration of one hour.
- Follow the markings on the benches for sitting or trying rental equipment.
- Only one person allowed at each of the washbasins, please wait for your turn at required distance, don't leave equipment in the washbasins, just rinse it and take it back to your box or your assigned place in the equipment room.



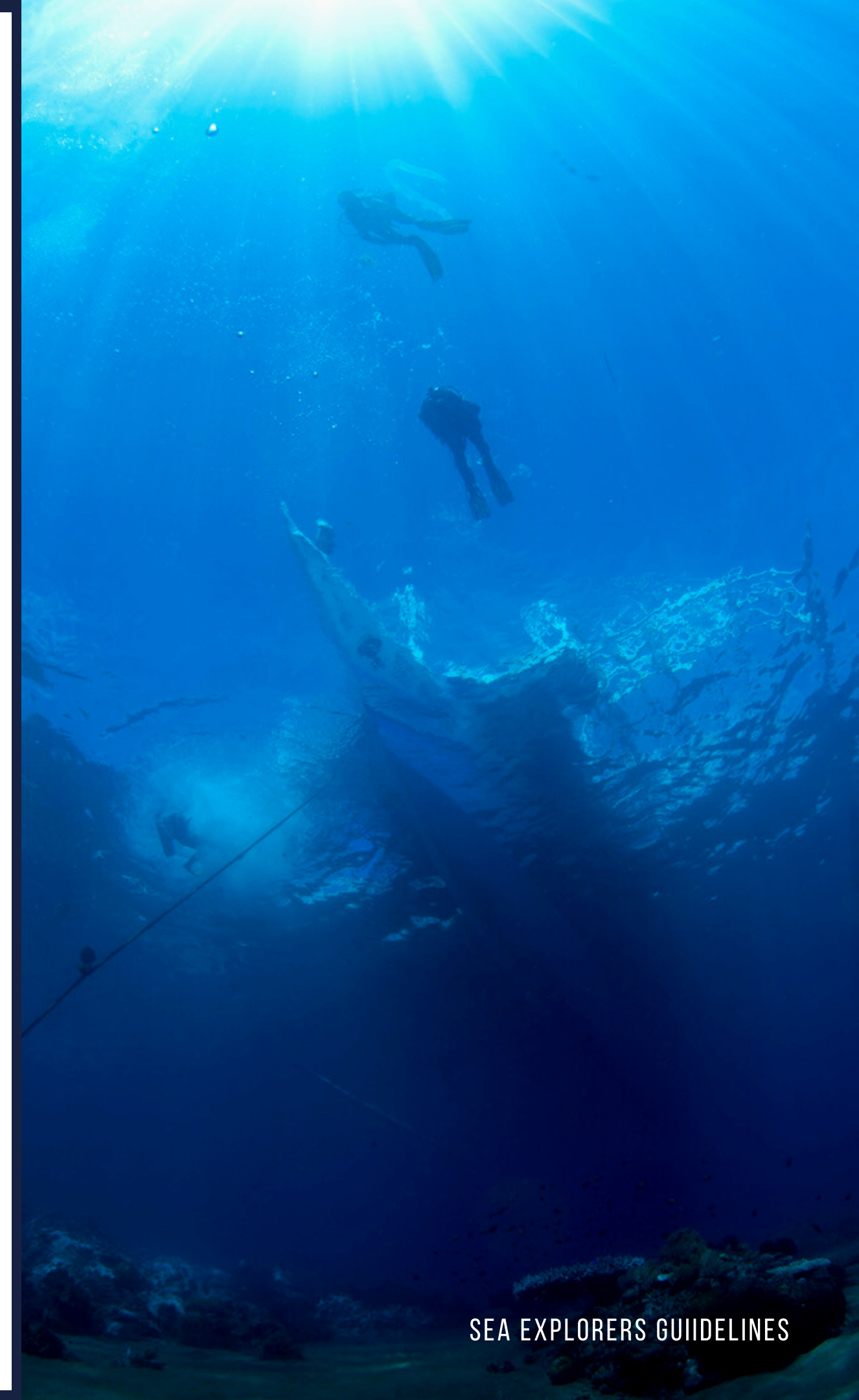


- If available, divers are encouraged to rinse their equipment directly through the outside shower or pool shower under running water (not possible in Cabilao and Alona).
- One washbasin is dedicated to your mask and regulator, no water inside (except for Cabilao), just rinses them under running water and an additional disinfectant spray will be available for your regulator. For mouthpiece and BCD mouth inflator system, some 70% isopropyl alcohol spray will be available. Personal alcohol spray and special covers for your mouthpieces can be purchased at the office for better safety.
- Avoid touching the equipment of other divers, especially at the drying station.
- At the washbasins, you can find antibacterial liquid soap to be able to wash your hands before you start rinsing your equipment and after you finish rinsing it.
- Sea Explorers staff is not allowed to touch your equipment, so for day trips, be sure that you put all of your equipment into your diving box. Then staff will take over and bring your
- box to the assigned boat.
- At the dive center, you are responsible for assembling and disassembling your diving equipment, staff will only help with tank handling. Removal or replacement of DIN insert is also your responsibility, alcohol will be provided for the disinfection of the valve.
- For NTX analyzing: the analyzer must be disinfected after use as well as the marker and ball pen you use. For that purpose, alcohol free wipes will be provided.
- After rinsing, we recommend that personal regulator and mask must be brought to your room to hang and dry.



# ONBOARD THE BANKAS: WHAT TO EXPECT DURING TRIPS

- Sea Explorers advises its divers to keep their facemask at all time during the boat trip and remove it just at the time of the dive. A bag to keep your facemask during the dive can be purchased at the office. It will help you to always keep it dry and provide safety during the time of your dive.
- Please respect the social distancing (2 meters / 6 feet) in all areas of the banka (cabin, sun “deck”, coffee station etc.). Number of guests per boat will be limited at 50% capacity to adhere to this rule.
- Boats will be sanitized after each trip including frequently touched surfaces.
- Tank valves will be automatically disinfected while put in position on the boat and ready for your equipment to be assembled.
- Sea Explorers staff will only be allowed to handle your BCD and switch tanks. You are responsible for assembling and disassembling your own regulator and opening your tank. You will be reminded before your entry to make sure you did not forget to open your tank.
- You will find antibacterial soap & hand sanitizer onboard.
- Also, alcohol will be provided for you to disinfect your mouthpieces after each dive.







- Sea Explorers requests that every diver possesses a personal commercial defog spray or drops (spitting in their mask is forbidden and especially in rental masks). As an alternative to defog, some liquid dishwashing soap will be available for sale at the dive center.
- Boats will no longer have mask rinsing tanks to reduce the risk, but staff will help you to flush it with sea water if you need to rinse your mask.
- Guests/divers are encouraged to bring their own water in reusable bottles and personal towel.
- Except during boat's manoeuvres, tea, coffee etc. will be served only upon direct request of the divers, one of the boat crew will be assigned to this, wearing gloves and will prepare the drinks following guest's requirements. Guests will be requested to keep the same mug during the whole day trip and rinse it by themselves if needed to be reused. Cookies will still be available, but fruits will not be served during this period.
- All equipment, tools, 1st aid kits contained in our spare boxes are previously disinfected before boxes being sealed.



# DIVING / COURSES:

## WHAT ARE THE PROCEDURES

- Buddies should be 2 secs away (approx. 1.5m) on surface and underwater. Visual buddy checks are recommended with self-demo and verbal confirmation.
- It is compulsory to use an alternate air source that has been previously disinfected and no sharing by student during courses unless assigned by an instructor during a specific skill. Alternate Air Source will then be disinfected again. There will be no use of primary air source for sharing (i.e.: long hose).
- Divers are encouraged to keep mask and regulator on after surfacing and should be removed on the boat when face mask is ready to be replaced (this acts as a PPE when necessary).
- In case of emergency, our guides and instructors are equipped with a pocket mask to serve as a barrier.
- Courses will be taught as much as possible in open-air and if not possible, a UV germicidal irradiation will take place after class for a duration of 30 minutes.
- PADI E-learning and eLearning Lite courses are strongly encouraged including the PADI online course paperwork. Student photo should be as well uploaded with the student's eLearning. Sea Explorers will send your code for online training prior to your course.
- Sea Explorers and PADI special procedures will be communicated with students upon signup. All instructors will be updated on new course skills and procedures by the Head of Instruction of the company prior to start a course.







# RENTAL EQUIPMENT: WHAT SAFETY RULES WE FOLLOW

- All diving gear is sanitized prior to being distributed & upon return.
- UV germicidal irradiation will take place every day after office hours for a duration of one hour.
- Staff and divers/students will wash hands before and after the trial procedure.
- Particular attention will be paid to masks, snorkels, and regulators with alcohol disinfection. After this, regulators will be protected by a pouch before storage.
- The rental diving equipment will be brought out to customers. Only accredited staff can enter the equipment rental room.
- Fitting of rental equipment will be done outside.
- Rental masks need to be fit-tested by each diver before use, which implies disinfection after each test. Divers may be encouraged to bring at least their own scuba mask. Sea Explorers can also provide brand new scuba masks for sale.

